

Using the BM488 log receiver

Running the software

Insert the CD and the BM488 log receiver program should start automatically after a short period of time. If not, doubleclick "BM488_log_receiver.exe" in the "dist"-library of the CD to start the log receiver.

Installing the VCP driver

The first time you connect your bilge alarm to your PC using the supplied USB-cable you will be asked for a driver for the newfound hardware. Simply point to the CD and the operating system will find the driver for you. To install the driver manually, doubleclick the "CDM#.##.##.exe" in the root directory of the CD.

The VCP (Virtual Com Port) – driver has to be installed for the connected bilge alarm to show up in the log receiver software. Note that the VCP-driver installation is only necessary once per PC.

Downloading the log of BilgMon488

The following steps will guide you through the process of downloading data from the log of your bilge alarm. Instructions prerequisite that the CD is inserted in your computer, that the VCP-driver is installed and that the "BM488_log_receiver.exe"-program is started.

Steps:

1. The initial screen will look similar to "Illustration 1: Initial screen".

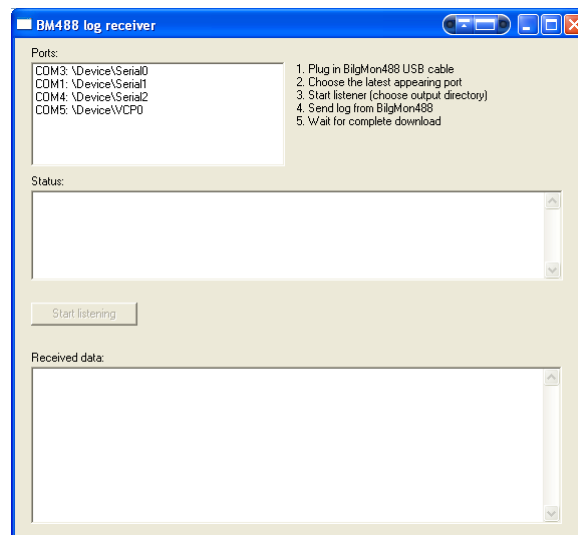


Illustration 1: Initial screen

2. Connect the BilgMon488 to your PC using the USB-cable. Note that the the bilge alarm does not need to be connected to a power supply since it gets power from the USB-cable. The connected bilge alarm will show up last in the "Ports"-list.
3. Choose the latest apearing port from the list.
4. Click the "Start listening"-button. A dialogue will appear where you can choose an output folder for the downloaded result. Coosse for example your desktop.
5. The software is now listening for data from BilgMon488 and the screen should look similar to "Illustration 2: Connected and listening".

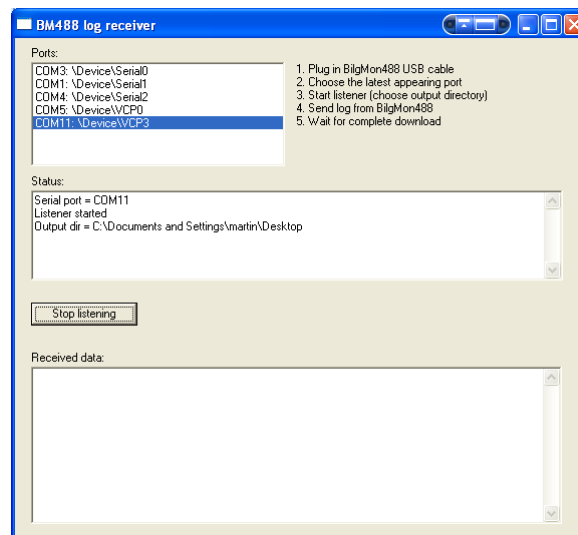


Illustration 2: Connected and listening

6. On your BilgMon488 navigate to the log-menu and step in to the log. When exiting the log you will be asked if you want to send the log. Answer yes and choose the amount of data to download. While the data is sent it will show up in the “Received data” section of the log receiver.
7. When the download is finished the screen will look similar to “Illustration 3: Finished”. the filename and position of the result can be found in the “Status:”-list.

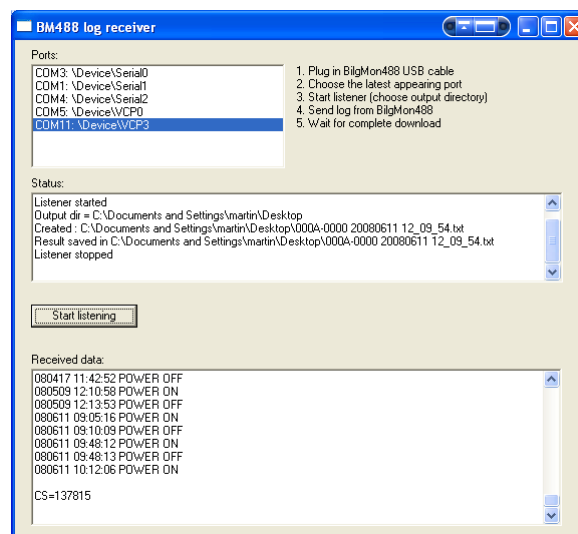


Illustration 3: Finished

8. Close the application.